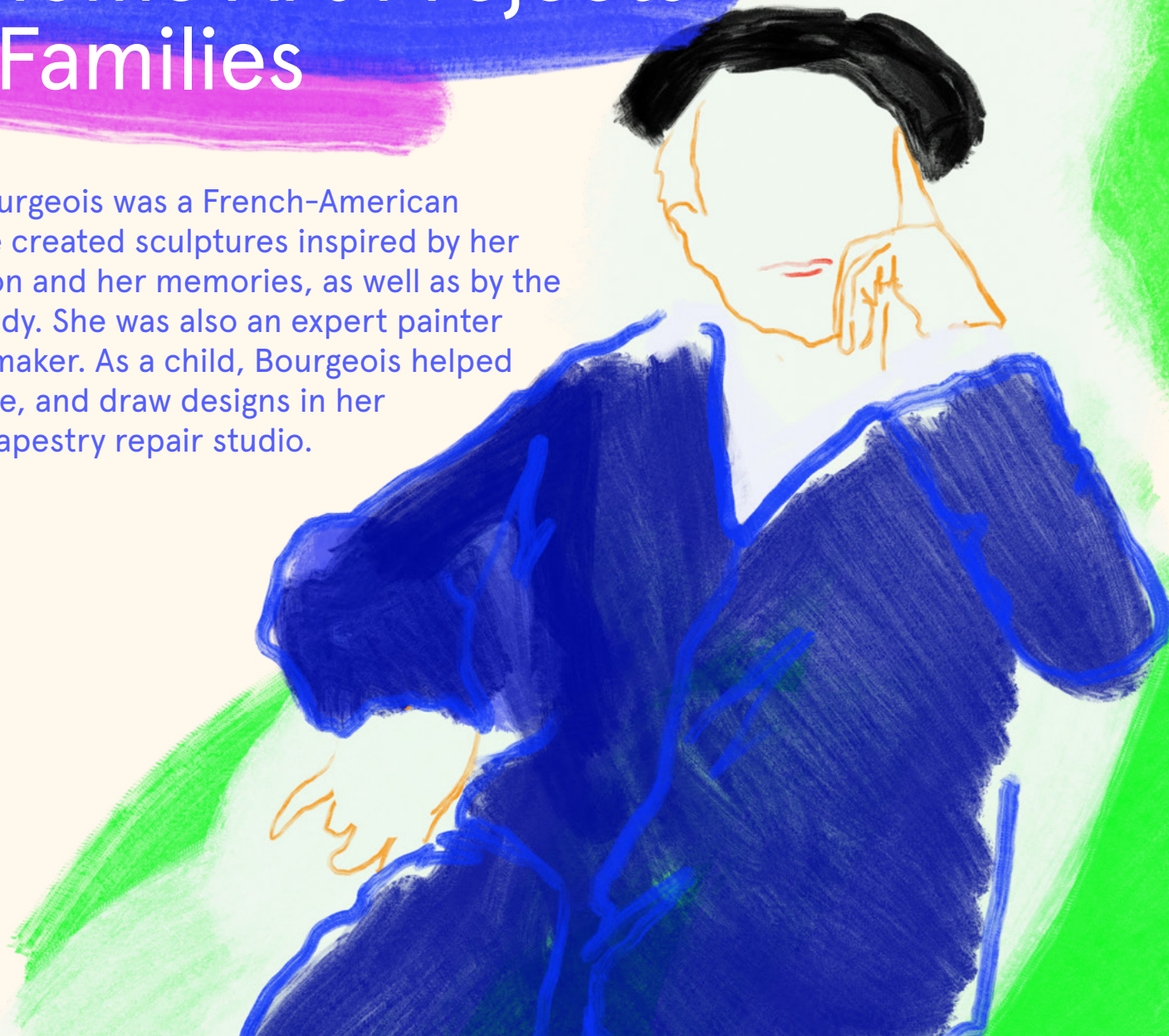


Louise Bourgeois, *Freud's Daughter* At-Home Art Projects for Families

Louise Bourgeois was a French-American artist. She created sculptures inspired by her imagination and her memories, as well as by the human body. She was also an expert painter and printmaker. As a child, Bourgeois helped sew, weave, and draw designs in her parents' tapestry repair studio.



Jewish Museum

Found Object Towers

For this activity, focus on repetition and building upwards to create a pair of sculptures using found materials.

Materials needed:

- Found objects such as cardboard, plastic bottles, small wood pieces, wire, buttons, and tubes
- Glue, Tape
- Scissors
- Clay - optional

Look:

- What materials do you notice in the sculptures to the right?
- What shapes do you see?
- Where do you see materials and shapes repeated?
- What is different about the structure on the left compared to the structure on the right? Think about them as characters in a conversation. What might they say to each other?
- Do either of the structures remind you of something from the world around you?
- Notice the glass box in which Bourgeois placed the sculptures. Why might she have put them in a display box?

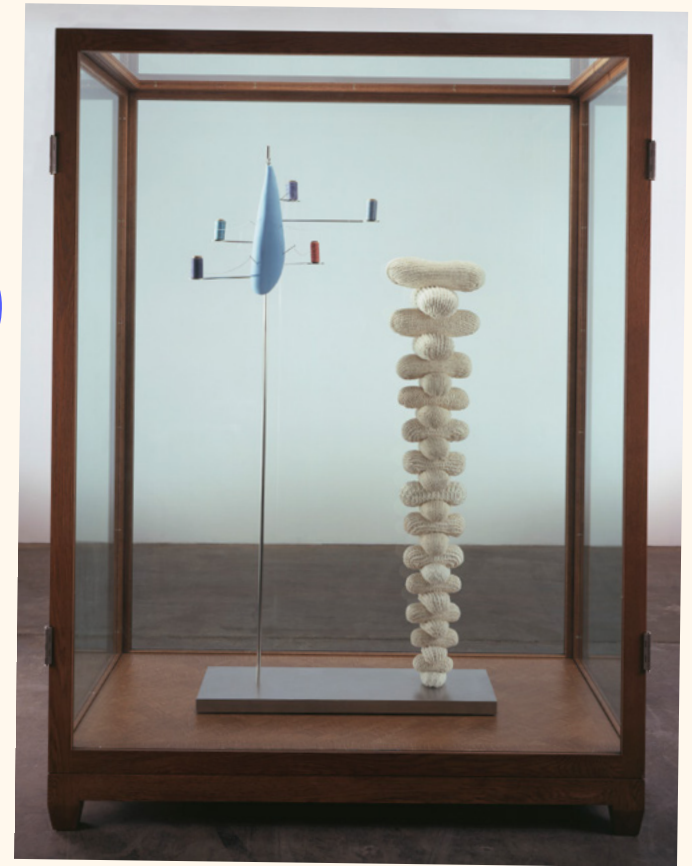
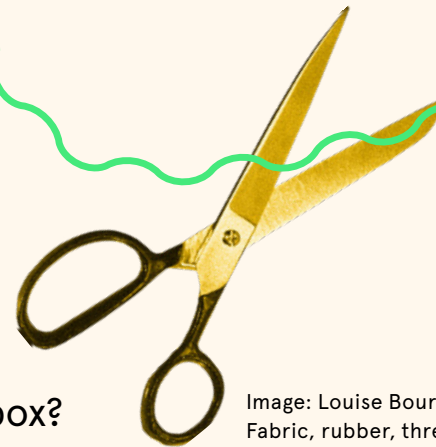
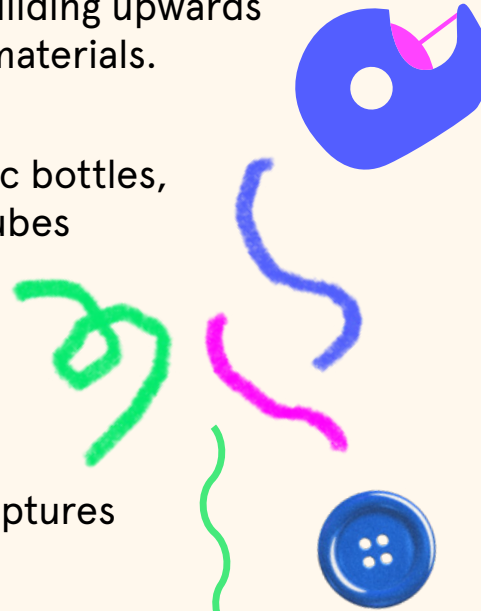
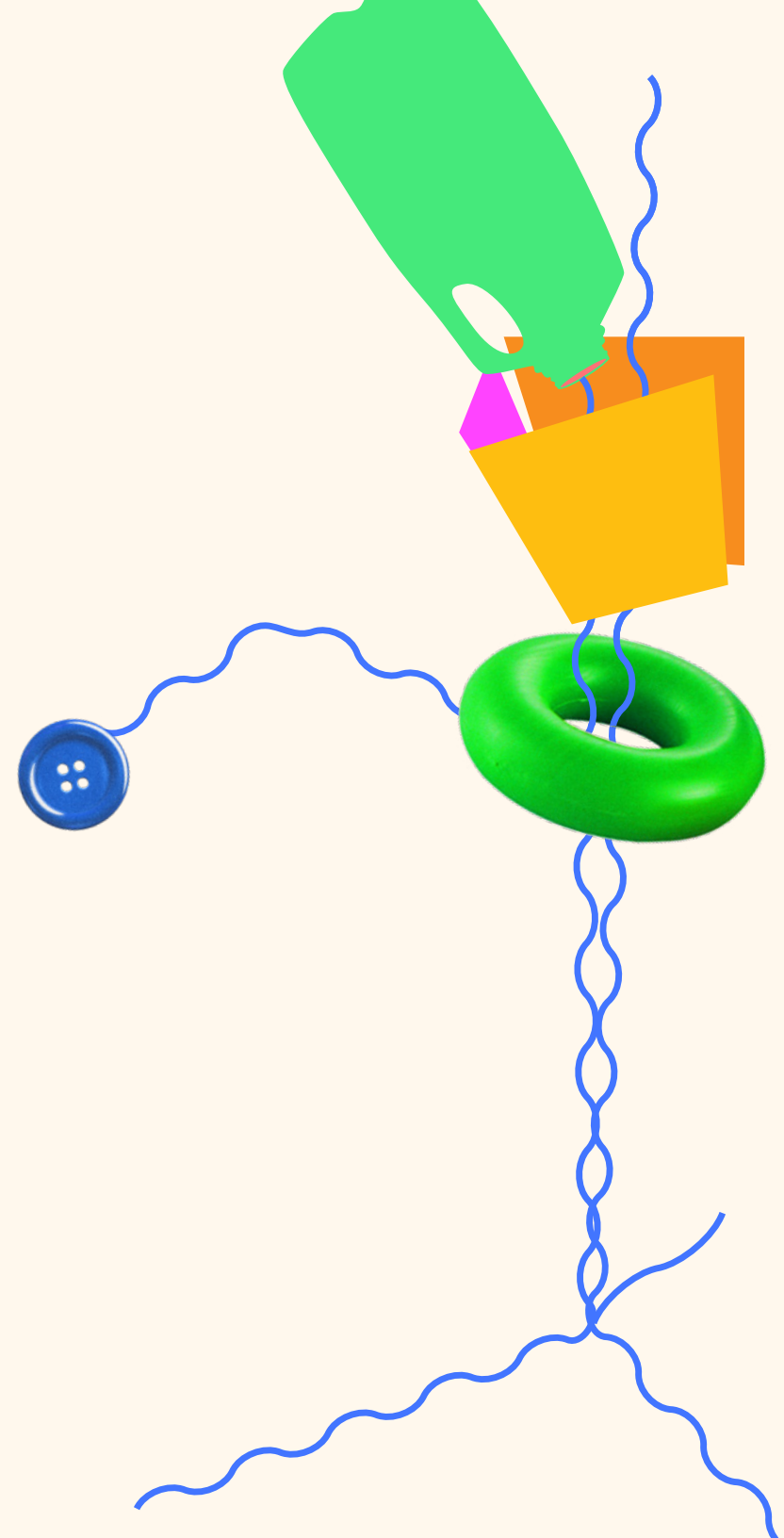
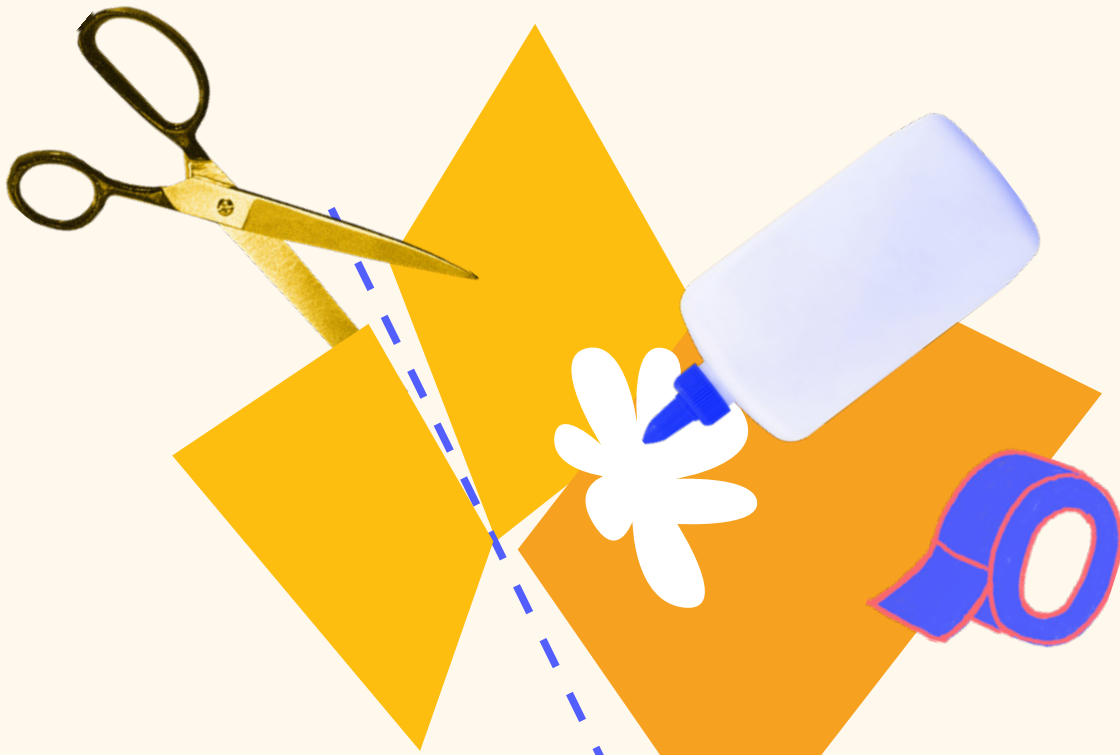


Image: Louise Bourgeois, *Conscious and Unconscious*, 2008. Fabric, rubber, thread, and stainless steel. © The Easton Foundation/Licensed by VAGA at Artists Rights Society (ARS), NY; Photo: Christopher Burke

This work is included in the exhibition *Louis Bourgeois, Freud's Daughter*, on view May 21 – September 12, 2021.

Process:

- Use your found materials, glue, and tape to build your own tower-like sculpture.
- Think about how you might build up and use repeated materials, shapes, and colors.
- Will you stack the same objects or alternate different materials? Will you hang objects off the sides of your tower? How will you attach and bind them together?
- Optional: Create a second sculpture to pair with the one you just created similar to the way Louise Bourgeois paired her forms.
- How might the second structure look different or, how might the two structures relate to each other? Will they be connected or separate?
- Where might you display these sculptures in your home?



AT-HOME ART PROJECTS FOR FAMILIES

Imaginative Character Portrait

For this activity, use watercolors to paint an imaginative character to represent yourself or someone you know.

Materials needed:

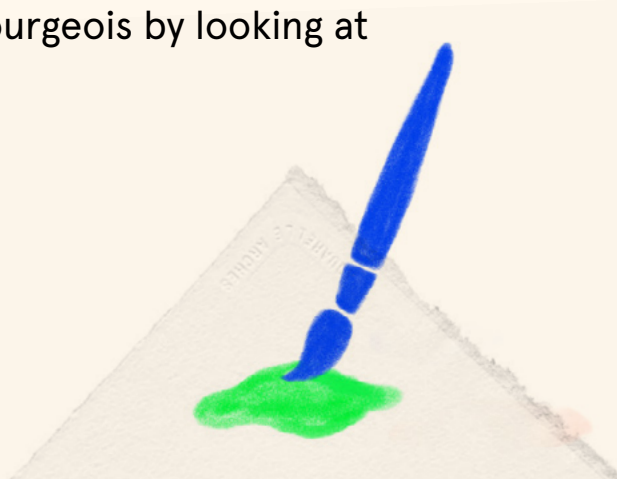
- Watercolor paint
- Brushes
- Water
- Watercolor paper or thicker weight paper

Look:

- What is unique about the character in this painting?
Does this person look real or imaginary?
- What do you notice about the clothes they are wearing?
- What do you see in the background?
- The title of this painting is "Self-Portrait." A self-portrait is a work of art that an artist makes about themselves. What can you tell about Louise Bourgeois by looking at this self-portrait?

Image: Louise Bourgeois, *Self-Portrait*, 1947. Oil on linen, 44 x 15 in. © The Easton Foundation/Licensed by VAGA at Artists Rights Society (ARS), NY

This work is included in the exhibition *Louise Bourgeois, Freud's Daughter*, on view May 21 – September 12, 2021.



Process:

- Use watercolor paints to create a playful character from your imagination to represent yourself or someone you know.
- Your portrait can include realistic as well as made-up features.
- Option: Consider painting an animal creature head on a person's body.
- Think about what else you might include in your painting. What are some of your subject's favorite things? What kind of clothing do they usually wear? Where does this person like to spend time?

