

KIDS GALLERY GUIDE

Scenes from the Collection

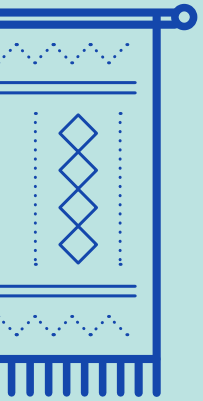


Scenes from the Collection

The exhibition on Floor 3 of the Museum is called *Scenes from the Collection*.

A **collection** is a group of objects or works of art gathered by a person or group of people.

What do you collect?



Thinking About Art

As you look at art in the galleries, here are some things you may think about:

What colors do you notice?



Do you see straight or curvy lines?



What shapes can you find?



What materials — such as stone, metal, or paint — can you find? Describe the texture.

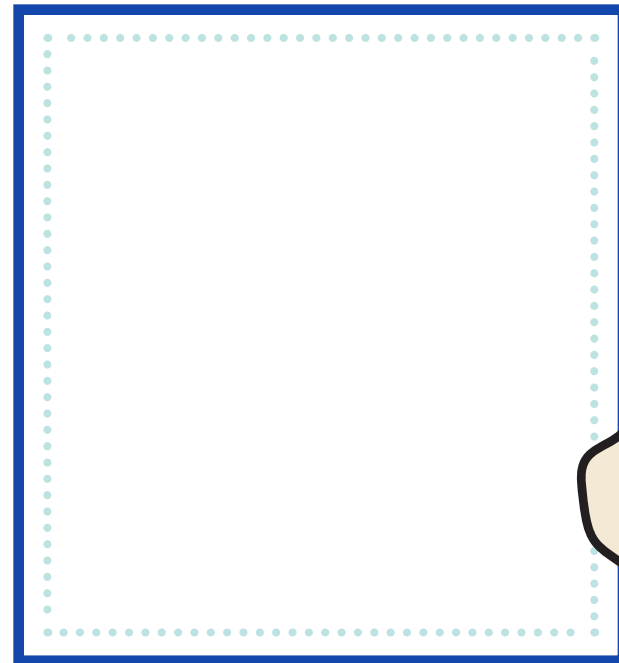


What do you like about this work of art?

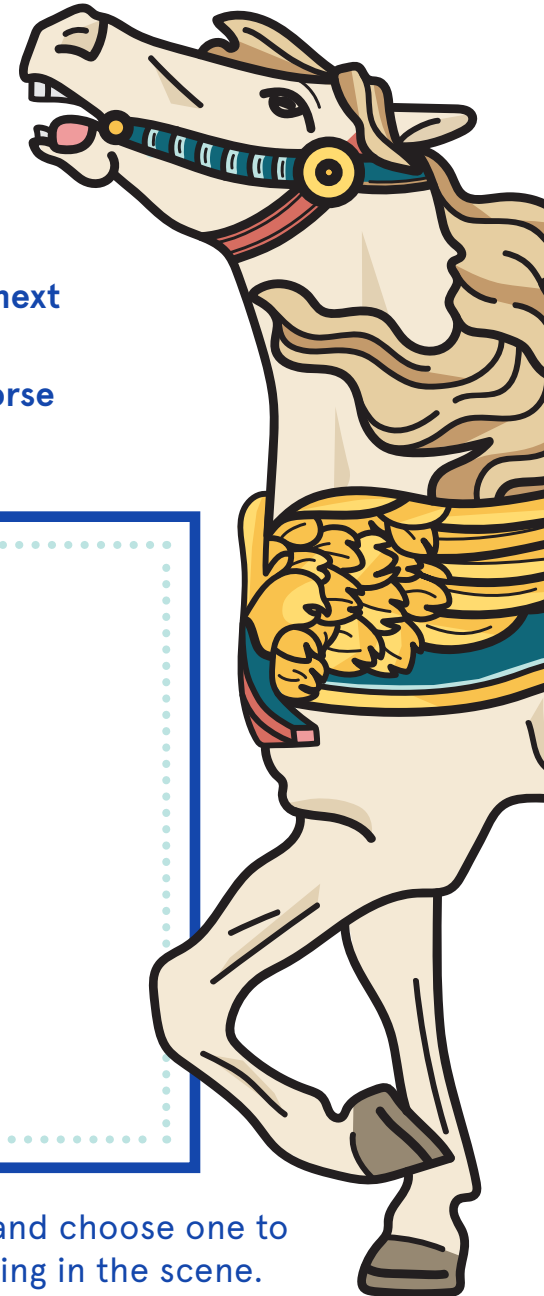
Exit the elevator and go left to find the room with two carousel horses.

Choose one horse and examine the details.

- How did the artist make this horse look special?
- What might the horse's next move look like?
- Sketch a detail of this horse in the space below.



Look at the photographs and choose one to talk about what is happening in the scene.



Constellations

Turn around and head past the elevators. Stop in the gallery named **Constellations**.

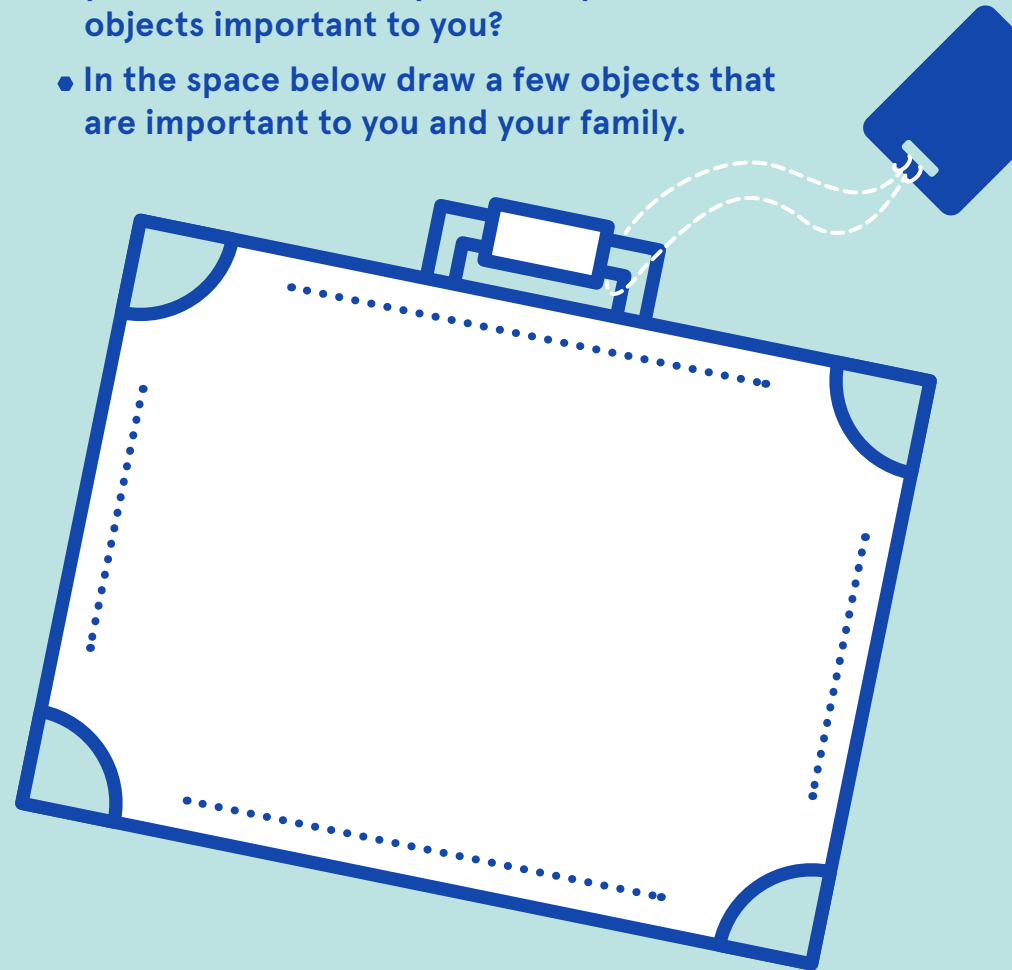
Find the white sculpture that looks like a suitcase, by the artist Arlene Shechet.

- Walk around the sculpture and look at it from all angles.
- Describe what you see. Do you recognize specific objects? What else stands out to you?



Shechet created copies of a pair of candlesticks her grandmother brought with her when she moved from Belarus to the United States in 1920.

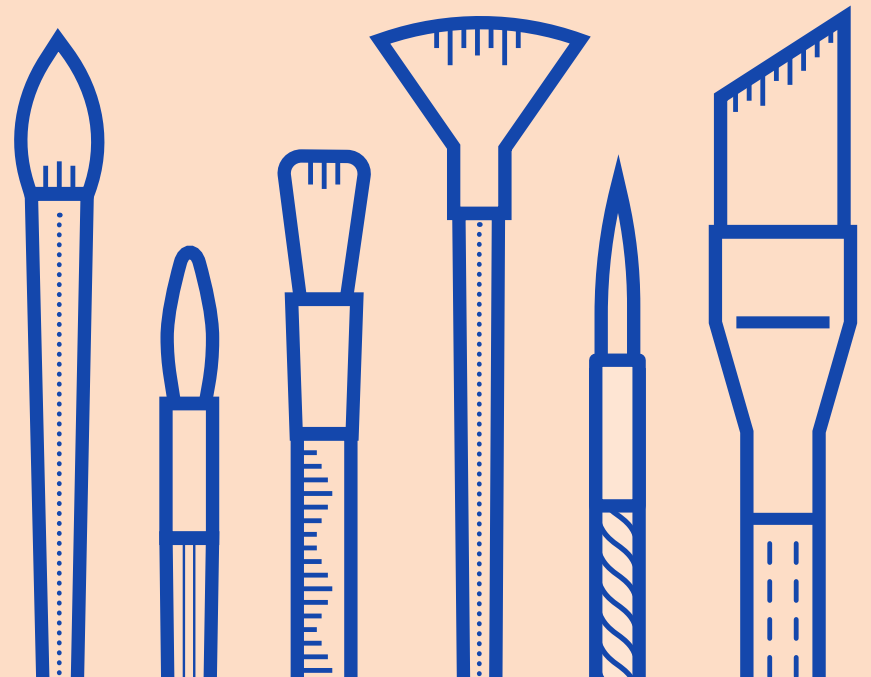
- This sculpture is called *Travel Light*. Do you have any new thoughts about this artwork after knowing the title?
- What objects would you choose to bring if you moved to a new place? Why are these objects important to you?
- In the space below draw a few objects that are important to you and your family.





Find the abstract painting filled with shapes and colors by the artist Eva Hesse.

- What colors do you see?
- Pretend you have a paintbrush in your hand. As if you are drawing in the air, follow a line in the painting with your imaginary brush.
- What kinds of shapes do you notice?
- Where do you see shapes that are new to you?
- Where do you recognize geometric shapes, such as a circle or square?
- Do any of the shapes remind you of something from the real world? Name what those shapes look like.
- Think of a story related to what you see in this painting and tell it to your grown-up.



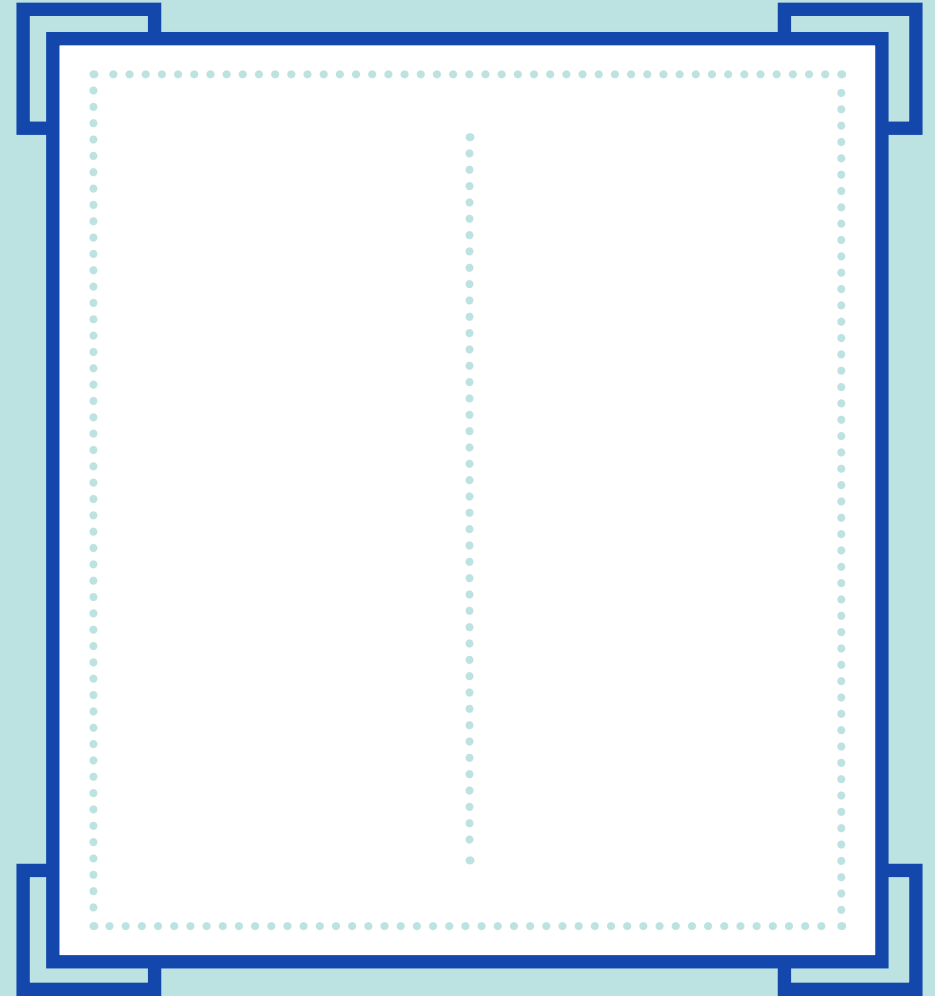
Find the painting by the artist Kehinde Wiley called *Alios Itzhak (The World Stage: Israel)*.

Wiley travels the globe to find interesting subjects for his artwork. This portrait is part of a series of paintings of young Israeli men from different religious and cultural backgrounds.



- What do you notice about the man portrayed in this painting?
- Strike the same pose as the figure. How does it feel to pose like him?
- Look closely at this painting. What do you notice that is symmetrical, or, “symmetrical (the same on both sides)?”

Wiley was inspired by traditional Jewish papercut designs. These designs are often symmetrical.



- Use the space above to create a symmetrical drawing. On one side, make your own design then try to mirror it on the other side.

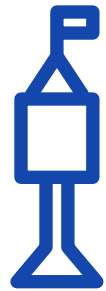
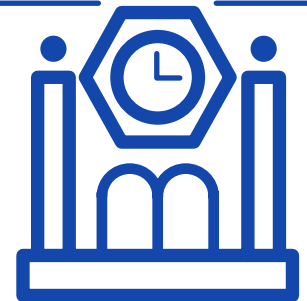
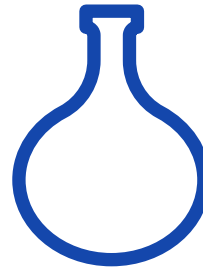
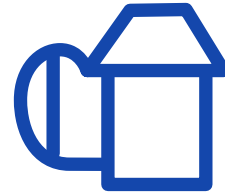
Taxonomies

Next, find the bright pink gallery named ***Taxonomies***.
This gallery contains a collection of interesting objects
from around the world.

Can you find the items listed below?
How many of each can you find?

- ☐ A clock
- ☐ An animal
- ☐ A boat
- ☐ Something made of clay
- ☐ Something that looks old
- ☐ Something that looks new
- ☐ Something similar to an object in your home

The iPads in this gallery have information about
these objects. If you are interested, spend some
time learning about them.



At Home

- Find three objects that are special to you or your family.
- Arrange them in a playful way on a table.
- Thinking about the art you saw today, use paint, collage, or colored pencils to create an image inspired by these objects.

Thank you for visiting the Jewish Museum. We hope you enjoyed the exhibition! For information on Family Programs at the Jewish Museum, visit TheJewishMuseum.org/Families or sign up for our eNews at TheJewishMuseum.org/eNews.

Scenes from the Collection is made possible with leadership support from Amy and Jeffrey Silverman and the Eugene and Emily Grant Family Foundation, and through gifts from Audrey and Zygi Wilf, Jane and Mark Wilf, Debra Fine and Martin Schneider, Tracey and Robert Pruzan, Monica and Andrew Weinberg, gifts in honor of Regina Gruss, Jonathan and Darcie Crystal, The Estate of Phyllis F. and Bert R. Ludwig, Neubauer Family Foundation, Rhoda, Nolan and Harriet Rothkopf, the Knapp Family Foundation, the David Berg Foundation, Betty and John Levin, the Malinsky Family Charitable Trust and the Ira Waldbaum Family Foundation, Sara and Axel Schupf, the Stern Family Philanthropic Foundation, UOVO, the Gottesman Fund, and other generous donors.

Kids Gallery Guides are supported, in part, through public funds from the New York City Department of Cultural Affairs in partnership with the City Council and the New York State Council on the Arts with the support of Governor Kathy Hochul and the New York State Legislature.



Cover: Installation view of Deborah Kass, *OY/YO*, 2016, produced 2017. Painted aluminum mounted on polished stainless-steel base. Jewish Museum, New York, Purchase: Gift in honor of Norman Kleeblatt, Susan and Elihu Rose Chief Curator of the Jewish Museum from 2005 to 2017, 2017-74. Photo: Kris Graves. **Page 4:** Installation view of Arlene Shechet, *Travel Light*, 2017. Gypsum, resin, and wax. Commission: Contemporary Judaica Acquisitions Committee and Judaica Acquisitions Committee Funds, 2018-2. Photo: Jason Mandella. **Page 6:** Eva Hesse, *Untitled*, 1963-64. Oil on canvas. Jewish Museum, New York, Gift of Helen Hesse Charash. **Page 8:** Kehinde Wiley, *Alios Itzhak (The World Stage: Israel)*, 2011. Oil and enamel on canvas. Jewish Museum, New York, Purchase: Gift of Lisa and Steven Tananbaum Family Foundation; Gift in honor of Joan Rosenbaum, Director of the Jewish Museum from 1981 to 2011, by the Contemporary Judaica, Fine Arts, Photography, and Traditional Judaica Acquisitions Committee Funds, 2011-31. Artwork © Kehinde Wiley



5th Ave at 92nd St, NYC
TheJewishMuseum.org
Under the auspices of the
Jewish Theological Seminary