



# Kids Gallery Guide

## Chaim Soutine: Flesh

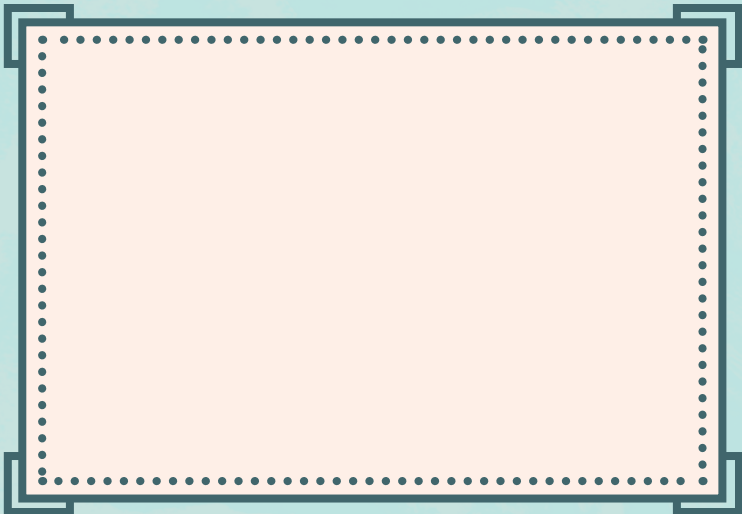
**For the adults:** Please note that certain works in the exhibition depict animal carcasses. This guide focuses on material for families to explore together.

Chaim Soutine was born in Lithuania in 1893. In 1913, he moved to Paris to pursue his dream of becoming an artist. This exhibition presents some of the artist's still life paintings—works of art depicting objects the artist observed and painted.

Enter the first gallery, *A Modern Still Life*. Find an artwork that looks interesting to you.

### Still Life Painting

- What objects do you see in this painting? Does anything surprise you?
- Sketch a detail in the space below.



## Color

- Which colors do you notice?  
Are they light or dark?
- Find the colors below in the painting.



## Texture

- Texture is the way the surface of something looks or feels. How would you describe the texture of this painting? Does it look rough, smooth, bumpy, or soft?

## At Home: Still Life Drawing

- Choose 3 or 4 objects. Arrange them on a table in front of you.
- Sketch these objects. Add color to your drawing using colored pencils.

*Chaim Soutine: Flesh* is made possible through support from Barbara and Ira A. Lipman, Linda and Ilan Kaufthal, Jeanine Parisier Plottel and Roland Plottel, Dr. Claude Ghez, the Neubauer Family Foundation, and the Family and Friends of Sally Lindenbaum.

Family Programs are supported, in part, by public funds from the New York City Department of Cultural Affairs in partnership with the City Council and the New York State Council on the Arts with the support of Governor Andrew M. Cuomo and the New York State Legislature.



5th Ave at 92nd St, NYC  
TheJewishMuseum.org  
Under the auspices of the  
Jewish Theological Seminary

