

Louise Bourgeois, Freud's Daughter

May 21-September 12, 2021

The Jewish Museum, New York

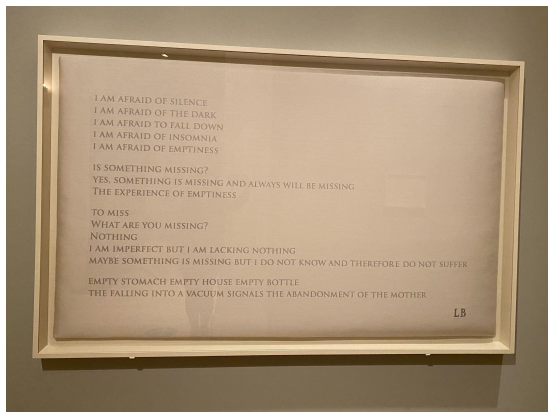
Exhibition Checklist

Images for reference only

All works by Louise Bourgeois

© The Easton Foundation

Entrance Hallway:



I Am Afraid

2009

Woven fabric mounted on a stretcher

43 1/2 x 72"; 110.5 x 182.9 cm.

Collection The Easton Foundation

First Gallery:



Couple III

1997

Fabric, leather, and steel arm brace

28 x 39 x 71"; 71.1 x 99.1 x 180.3 cm.

Wood and glass vitrine: 56 x 98 x 46"; 142.24 x 248.92 x 116.84 cm.

Collection The Easton Foundation



Conscious and Unconscious

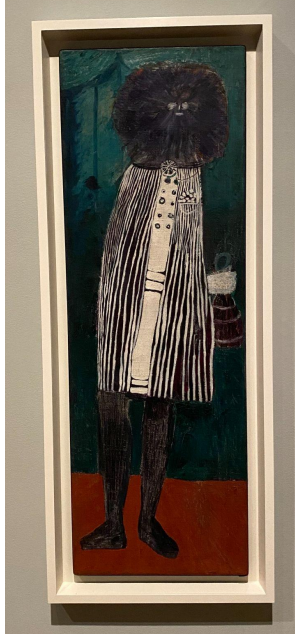
2008

Fabric, rubber, thread, and stainless steel

69 x 37 x 18 1/2"; 175.3 x 94 x 47 cm.

Vitrine: 88 1/2 x 66 x 37"; 224.8 x 167.6 x 94 cm.

Collection The Easton Foundation



Self-Portrait

1947

Oil on linen

44 x 15"; 111.8 x 38.1 cm.

45 3/4 x 16.5 x 1.5"; 116.21 x 41.91 x 3.81 cm.

Collection The Easton Foundation



Untitled

2002

Tapestry and aluminium

18 x 12 x 12"; 45.7 x 30.5 x 30.5 cm.

Collection The Easton Foundation

Second Gallery:



Arched Figure No. 3

1997

Fabric and steel

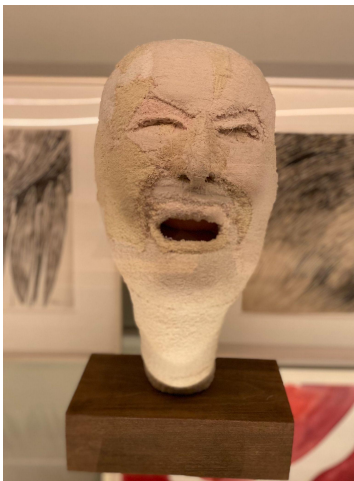
Figure: 20 x 14 x 49" / 50.8 x 35.5 x 124.4 cm.

Wood and glass vitrine: 69 x 30 x 65" / 175 x 76 x 165 cm.

Private collection, courtesy of Hauser and Wirth Collection Services

Vitrine:

Top Shelf:



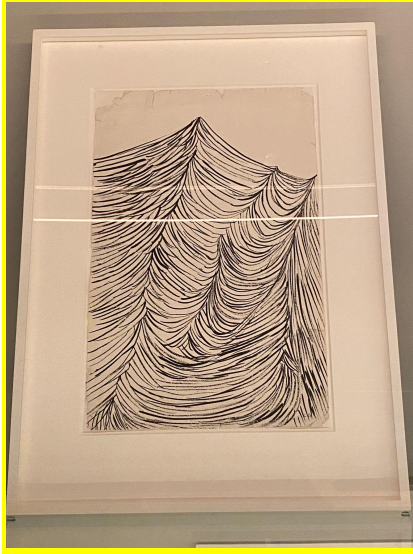
Rejection

2001

Fabric, steel, and lead

25 x 13 x 12"; 63.5 x 33 x 30.5 cm.

Collection of John Cheim



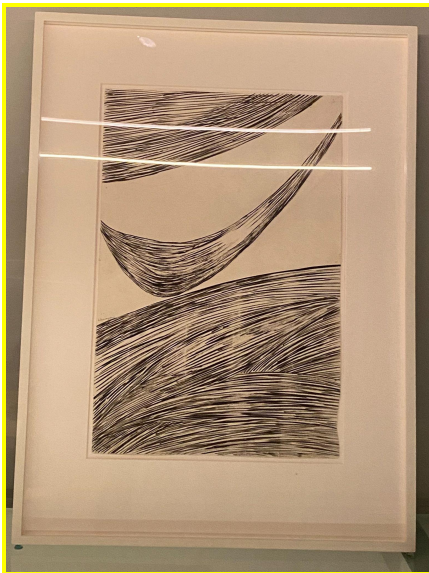
Untitled
1949
Ink on paper
Collection The Easton Foundation



Untitled
1949
Ink on paper
Collection The Easton Foundation



Untitled
1950
Ink on paper
Collection Louise Bourgeois Trust



Untitled
1952
Ink on paper
Private Collection, New York

Middle Shelf:



Hysterical

2001

Fabric, stainless steel, glass, wood, and lead
18 x 8 x 6 1/4 "; 45.7 x 20.3 x 15.9 cm.

Collection The Easton Foundation



Knife Figure

2002

Fabric, steel, and wood

8 3/4 x 30 x 7 1/2"; 22.2 x 76.2 x 19.1 cm.

Collection The Easton Foundation



Untitled

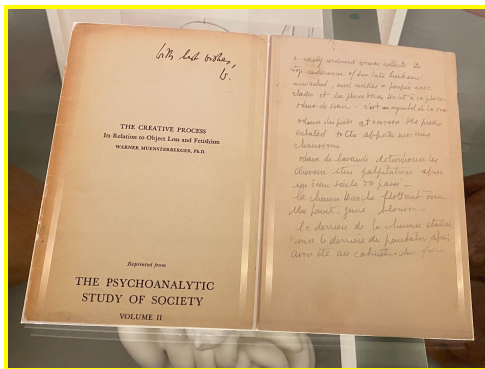
1940 (recto) 1990 (verso)

Oil and pencil on board (recto)

Oil on board (verso)

13 1/8 x 11 7/8"; 33.3 x 30.2 cm.

Collection The Easton Foundation



Pencil inscription on the back cover of

The Creative Process, vol. 2,

The Psychoanalytic Study of Society (1962),

By Werner Muensterberger, c. 1963

Collection Louise Bourgeois Archive, The Easton Foundation,

Ib-0109



Why Have You Run So Far Away?

1999

Patchwork fabric and thread

10 x 13 x 10"; 25.4 x 33 x 25.4 cm.

Collection The Easton Foundation



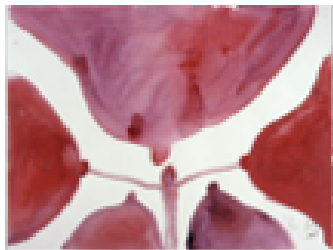
Femme Couteau (Knife Woman)

1969-70

Pink marble

3 1/2 x 26 3/8 x 4 7/8"; 8.9 x 67 x 12.4 cm.

Collection of Pamela and Arthur Sanders



The Feeding

2008

Gouache on paper

18 x 24"; 45.7 x 61 cm.

Collection The Easton Foundation



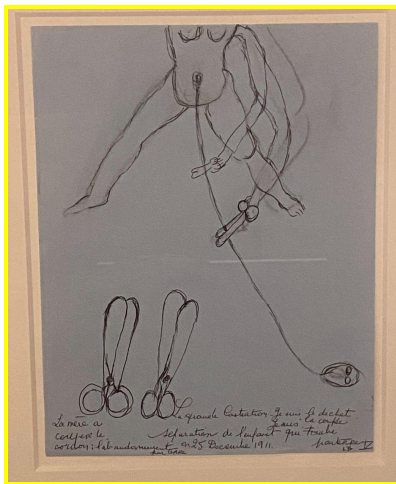
Mother and Child

2007

Fabric and thread

10 3/4 x 26 x 14 1/2"; 27.3 x 66 x 36.8 cm.

Collection Louise Bourgeois Trust



La Mère À Couper le Cordon (Mother Cut the Cord)

1986

Ink and charcoal on blue paper

11 x 8 1/2"; 27.9 x 21.6 cm.

Artist Rooms Foundation



The Guilty Girl is Fragile
2001

Fabric, lead, and steel
16 x 12 x 7"; 40.6 x 30.5 x 17.8 cm.
Private collection

Bottom Shelf:

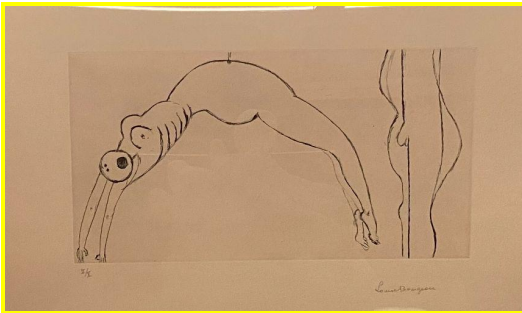


Le Trani Episode (The Trani Episode)
1971

Plaster and latex
16 1/2 x 23 1/8 x 23 1/4"; 41.9 x 58.7 x 59.1 cm.
Collection The Easton Foundation



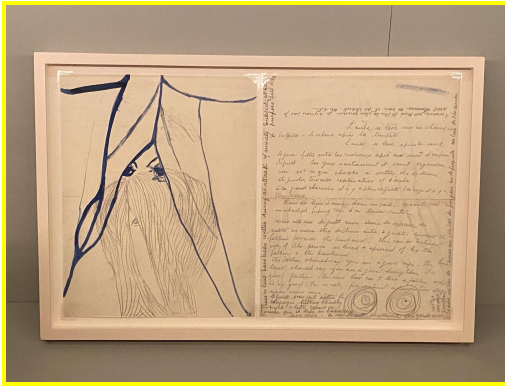
Portrait of Robert
1969-81
Marble
13 x 13 x 8"; 33 x 33 x 20.3 cm.
Collection The Easton Foundation



Arched Figure
1993
Drypoint on paper
15 5/8 x 22" 39.7 x 55.9 cm.
Collection the Easton Foundation



Le Regard (The Look)
1963
Latex and cloth
5 x 15 1/2 x 14 1/2"; 12.7 x 39.4 x 36.8 cm.
Collection The Easton Foundation



Untitled

1960

Ink and pencil on paper, with pencil

Inscription on verso

Facsimiles (recto and verso)



End of Softness

1967

Bronze with gold patina

7 x 20 3/8 x 15 1/4"; 17.8 x 51.8 x 38.7 cm.

Private Collection, New York



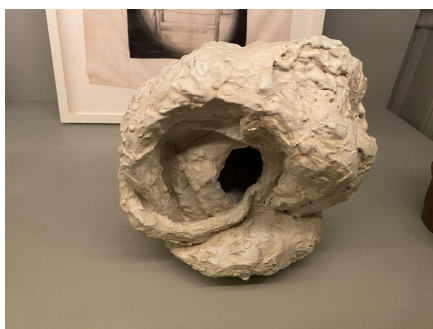
Do Not Abandon Me

2000

Drypoint on cloth

17 1/2 x 17 1/2"; 44.5 x 44.5 cm.

Collection The Easton Foundation



Rondeau for L

1963

Plaster

11 x 11 x 10 1/2"; 27.9 x 27.9 x 26.7 cm.

Private Collection, New York



Fragile Goddess

1970

Bronze with gold patina

10 1/4 x 5 5/8 x 5 3/8"; 26 x 14.3 x 13.7 cm.

Collection The Easton Foundation

Third Gallery:



Ventouse (Cupping Jar)

1990

Marble, glass, and electric light

34 x 78 x 32"; 86.4 x 198.1 x 81.3 cm.

Collection The Easton Foundation



Untitled

2001

Fabric, steel, and glass

11 x 27 x 21"; 27.9 x 68.6 x 53.3 cm.

Vitrine: 69 x 33 x 33"; 175.2 x 83.8 x 83.8 cm.

Collection of Paul and Karen McCarthy



Child Devoured by Kisses

1999

Fabric, thread, stainless steel, wood, and glass

39 x 33 x 20"; 99.1 x 83.8 x 50.8 cm.

Vitrine: 77 1/2 x 50 x 36"; 197 x 127 x 91.4 cm.

Courtesy of Xavier Hufkens, Brussels

Fourth Gallery:



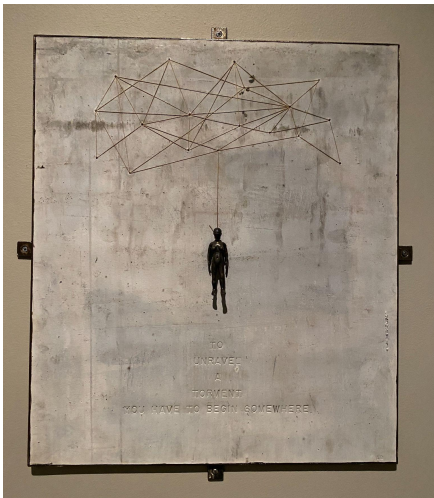
Passage Dangereux

1997

Metal, wood, tapestry, rubber, marble, steel, glass, bronze, bones, flax, and mirrors

104 x 140 x 345"; 264.2 x 355.6 x 876.3 cm. 8'7" x 11'7" x 28'8"; 22.1 x 29.72 x 73.15 cm.

Private collection, courtesy of Hauser and Wirth Collection Services



Torment

1999

Lead, steel, and thread wall relief

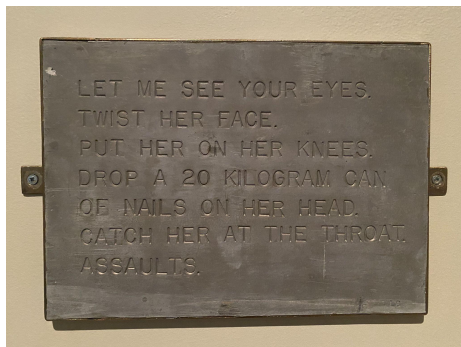
27 x 25 x 1 1/2"; 68.6 x 63.5 x 3.8 cm.

Private collection, courtesy of Hauser and Wirth Collection Services



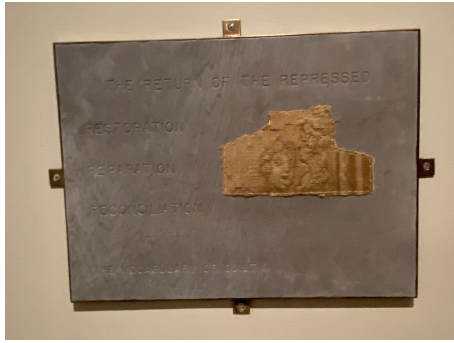
The Trauma Colors
1999

Wall relief: lead, steel and fabric
28 1/4 x 22 1/4 x 3"; 71.8 x 56.5 x 7.6 cm.
Private collection



Assaults
1999

Lead and steel wall relief
10 1/4 x 16 1/2 x 1/2"; 26 x 41.9 x 1.3 cm.
Private collection, courtesy of Hauser and Wirth



The Vocabulary of Guilt

1999

Lead, steel, and tapestry wall relief

17 1/4 x 22 1/2 x 5/8"; 43.8 x 57.2 x 1.6 cm.

Private Collection Kaegi-Aigrain

Hallway Gallery:



Persistent Antagonism

1946-48

Bronze, paint, metal and stainless steel

66 1/2 x 12 x 12"; 168.9 x 30.5 x 30.5 cm.

Collection The Easton Foundation



Dagger Child

1947-49

Bronze, paint and stainless steel

75 5/8 x 12 x 12"; 192.1 x 30.5 x 30.5 cm.

Collection The Easton Foundation



Untitled

1953

Bronze

59 1/4 x 8 1/2 x 8 1/2"; 150.5 x 21.6 x 21.6 cm.

Collection The Easton Foundation



Untitled

1947

Ink on illustration board

9 3/4 x 14"; 24.8 x 35.6 cm.

Collection Louise Bourgeois Trust

Fourth Gallery:



Orange Episode

1990

Oil, gouache and orange collage on board

17 x 13 1/8"; 43.2 x 33.3 cm.

Private Collection, New York



Janus Fleuri

1968

Bronze with gold patina

10 1/8 x 12 1/2 x 8 3/8"; 25.7 x 31.8 x 21.3 cm.

Private Collection, New York



Sleep II

1967

Marble

23 3/8 x 30 1/4 x 23 3/4"; 59.4 x 76.8 x 60.3 cm.

Collection The Easton Foundation



Fillette (Sweeter Version)

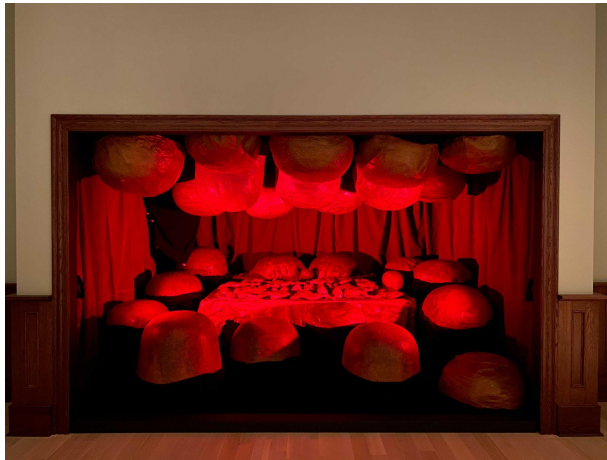
1969-99

Pigmented urethane rubber

23 1/2 x 10 1/2 x 7 3/4"; 59.7 x 26.7 x 19.7 cm.

[Note: hanging piece: wire hook is 5 1/2" high]

Collection The Easton Foundation



The Destruction of the Father

1974-2017

Archival polyurethane resin, wood, fabric, and red light

93 5/8 x 142 5/8 x 97 7/8"; 237.8 x 362.3 x 248.6 cm.

Collection The Easton Foundation